



ClearOne's second-generation Beamforming Mic Array is the professional-grade microphone array with beamforming and adaptive steering, ClearOne's next-generation Acoustic Echo Cancellation and Noise Cancellation.

The ultra-sleek design fits into any conferencing environment and delivers the clearest audio pickup available with its Acoustic Intelligence.

2nd-Generation Mic Array

- + Beamforming & adaptive steering technology— Think of it as smart beam selection
- + Most advanced AEC & NC
- + Acoustic Intelligence with adaptive ambience
- + Replaces 9 to 12 traditional microphones

Ultra-Sleek Design

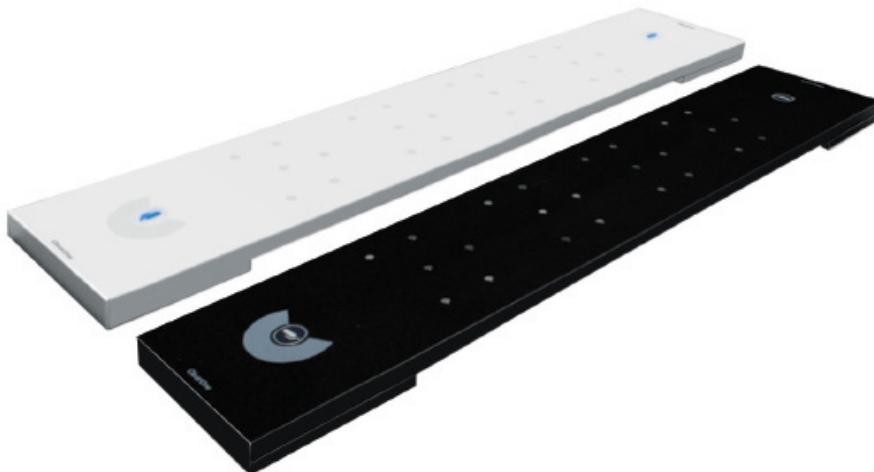
- + Three mounting options - Ceiling, Wall & Table
- + Two power options: P-link, PoE
- + Standard ceiling projector mount

Flexible & Scalable

- + Daisy-chain up to 3 arrays per CONVERGE[®] Pro 2 unit
- + Zero-consumption of CONVERGE Pro 2 analog inputs
- + Single cable for power, audio & control
- + Daisy-chain with DIALOG[®] 20 Wireless Mic System

Configuration & Management

- + New CONVERGE Pro 2 CONSOLE software
- + Auto-discovery of devices
- + System monitoring and troubleshooting



APPLICATIONS

Boardrooms

Conference Rooms

Large Lecture Halls

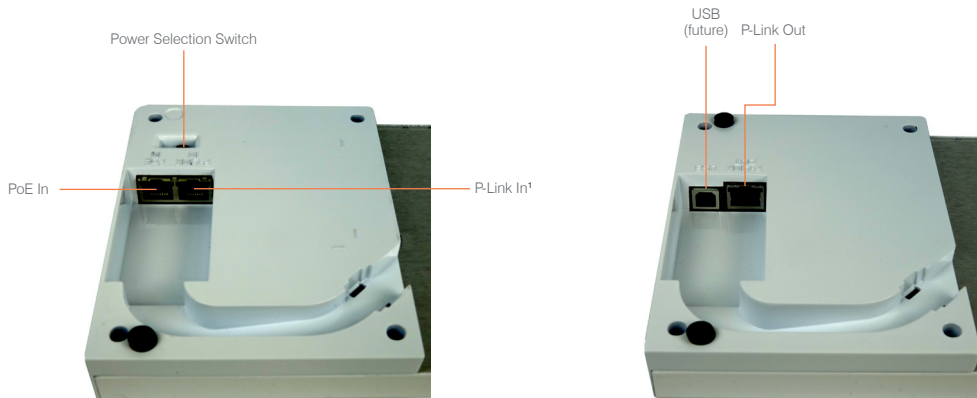
Training Centers

Courtrooms

Telemedicine Facilities

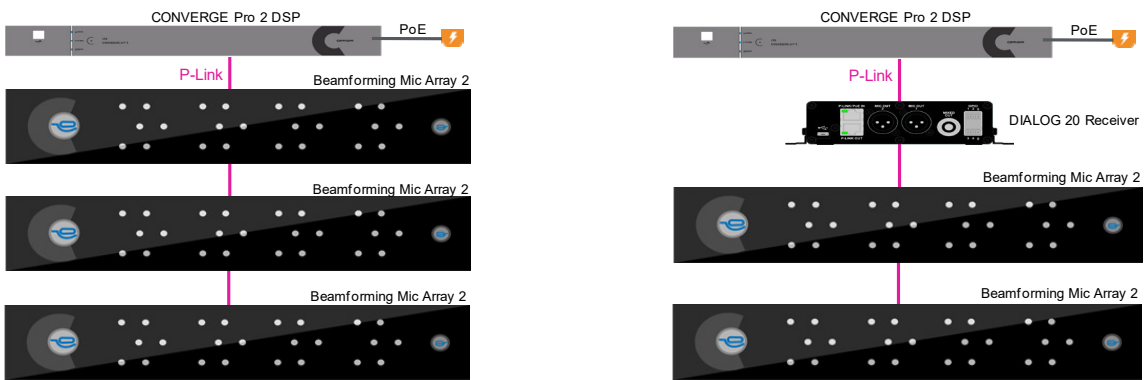
Houses of Worship

Rear Connections

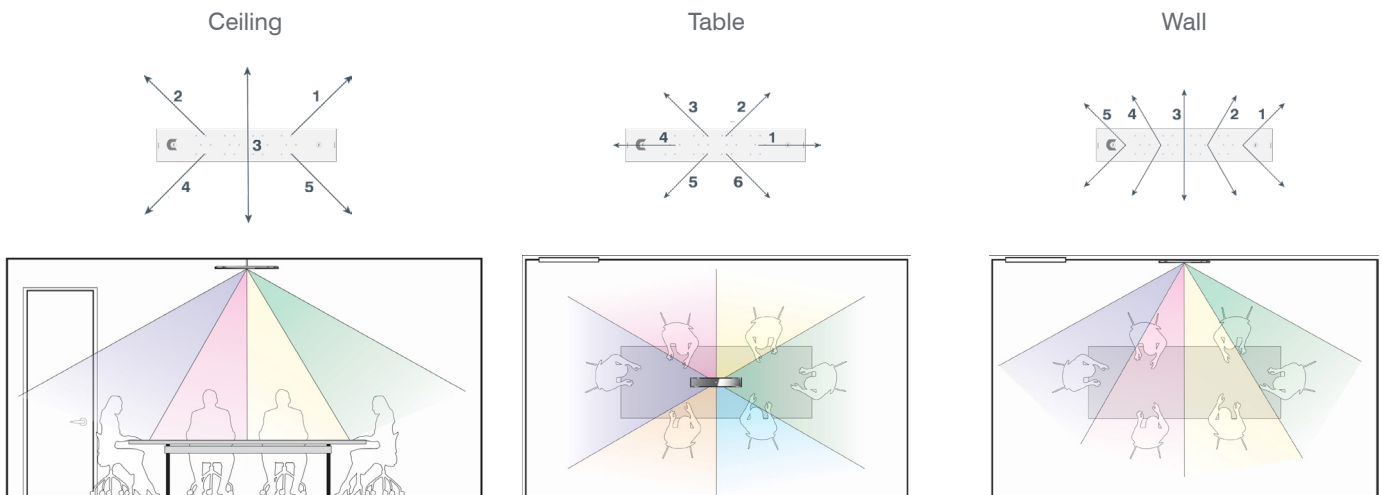


Note 1: International Version (Part No. 910-3200-201) P-link input port is shown in drawing above.
 US Version (Part No. 910-3200-201-U & 910-3200-201-B-U) P-Link input is accessed through a permanently connected CAT 6 pigtail cable that is terminated with an RJ-45 receptacle.

Connection Diagrams



Operating Modes



PRODUCT SPECIFICATIONS

Audio

24 microphones

1 Channel In (does not use any input channels in CONVERGE Pro 2)

Number of Beams:

- 5 in Ceiling mode
- 6 in Table mode
- 5 in Wall mode

Polar Pattern: Custom

Frequency Response: 150Hz – 16kHz, +/- 3dB

Dynamic Range: 150Hz – 16kHz, >70dB

LED & Touch Sensor

Sensor Type: 2 Capacitive Touch Button for Mute

LED (2x: one on each end of a unit):

- Power On
- Power On & Unmuted: Blue
- Muted: Red
- Power Off: No light

Configuration

Beam enable/disable

Mounting mode selection:

- Auto
- Ceiling
- Wall
- Table

Acoustic Echo Cancellation (AEC) on/off

Noise Cancellation (NC) on/off

Filters:

- All Pass
- Low Pass
- High Pass
- Notch
- PEQ

Automatic Level Control (ALC) on/off

Gain adjust

Mute on/off

Auto gate/Manual gate

USB

For future use

P-Link Peripheral Bus

P-Link In & Out: Proprietary Peripheral Bus

Ports Type: RJ-45

Cable: Solid core 24AWG, factory terminated Cat 5e or Cat 6

Distance: Up to 200 feet

Sub-standard: Mode B

Daisy-Chain:

Up to 3 Beamforming Microphone Array 2 units with each supported CONVERGE Pro 2 unit in the same chain

Up to 3 Beamforming Microphone Array 2 units and up to 3 DIALOG 20 Wireless Receiver units with each supported CONVERGE Pro 2 unit in the same chain

Up to 6 Beamforming Microphone Array 2 units in the same chain with 2 supported CONVERGE Pro 2 units connected through C-Link (future software/firmware upgrade)

Long Distance P-Link:

Increases P-Link distance from 200 Ft to 650 Ft 650 Ft (200M) maximum cable distance between any two units
Cat6, 550 MHz, 23 AWG, solid conductor cable
Do not use Copper Clad Aluminum (CCA) cable
Available only for BFM2 peripheral units
48V PoE Midspan Mode B power injector for 1 BFM2 unit
56V PoE Midspan Mode B power injector for 3 BFM2 units

Power Selection Switch

Sensor Type: Slide Switch

- Toggle toward P-Link to power device by P-Link
- Toggle toward PoE to power device by PoE Injector

Configuration & Administration Software

CONVERGE® Pro 2 CONSOLE® Software

Commands

Through supported CONVERGE Pro 2 unit connected through P-Link

Mounting

Ceiling mount kit (12", 24", 36", and 48" suspension column)

Wall mount kit

Table mount

Power & Thermal

Power Type: PoE

Port Type: RJ-45

Power Source: P-Link or PoE Injector

PoE In: PoE IEEE 802.3at

Power Source Indicator:

Set the position of the power source to indicate the source of the power (P-Link or PoE)

Mains Voltage: 100-240VAC, 50/60Hz
AC Power Consumption: 12W Typical
DC Power Consumption: 5.26W Typical

Thermal: 40.95 BTU/Hr

Operating Temperature:

14° F/-10° C to 104° F/40° C ambient temperature

Dimension & Weight (WxHxD)

30" x 1" x 5.75" (762mm x 25.4mm x 146mm)

Unit Weight: 4.4 lbs (2.0kg)

Shipping Weight: 5.7 lbs (2.59kg)

Part Numbers

910-3200-201: (Intl) White Beamforming Microphone Array 2

910-3200-201-U: White Beamforming Microphone Array 2

910-3200-201-B: (Intl) Black Beamforming Microphone Array 2

910-3200-201-B-U: Black Beamforming Microphone Array 2

Supported CONVERGE Pro 2

Part Number	Product
910-3200-001	CONVERGE Pro 2 128
910-3200-001-D	CONVERGE Pro 2 128D
910-3200-002	CONVERGE Pro 2 128T
910-3200-002-D	CONVERGE Pro 2 128TD
910-3200-003	CONVERGE Pro 2 128V
910-3200-003-D	CONVERGE Pro 2 128VD

SALES AND INQUIRIES

Headquarters

5225 Wiley Post Way
Suite 500
Salt Lake City, UT 84116

US & Canada

Tel: 801.975.7200
TollFree: 800.945.7730
Fax: 801.303.5711

International

Tel: +1.801.975.7200
global@clearone.com

Sales

Tel: 801.975.7200
sales@clearone.com

TechSupport

Tel: 801.974.3760
tech.support@clearone.com

PRODUCT SPECIFICATIONS

Part Number	Product
910-3200-005	CONVERGE Pro 2 48T
910-3200-006	CONVERGE Pro 2 48V
910-3200-004	CONVERGE Pro 2 120

Accessories

Part Number	Product
910-3200-202	PoE Power supply kit for BFM
910-3200-203-12	BFM2 Ceiling Mount kit with 12" Suspension Column - White
910-3200-203-12-B	BFM2 Ceiling Mount kit with 12" Suspension Column - Black
910-3200-203-24	BFM2 Ceiling Mount kit with 24" Suspension Column - White
910-3200-203-24-B	BFM2 Ceiling Mount kit with 24" Suspension Column - Black
910-3200-203-36	BFM2 Ceiling Mount kit with 36" Suspension Column - White
910-3200-203-36-B	BFM2 Ceiling Mount kit with 36" Suspension Column -Black
910-3200-203-48	BFM2 Ceiling Mount kit with 48" Suspension Column - White
910-3200-203-48-B	BFM2 Ceiling Mount kit with 48" Suspension Column - Black
910-3200-203	BFM2 Ceiling Mount kit without Suspension column - White
910-3200-203-B	BFM2 Ceiling Mount kit without Suspension column - Black
910-001-005-12	BFM White Ceiling Mount kit with 12" suspension column
910-001-005-12-B	BFM Black Ceiling Mount kit with 12" suspension column
910-001-005-24	BFM White Ceiling Mount kit with 24" suspension column
910-001-005-24-B	BFM Black Ceiling Mount kit with 24" suspension column
910-001-005-36	BFM White Ceiling Mount kit with 36" suspension column
910-001-005-48	BFM White Ceiling Mount kit with 48" suspension column
910-001-006	BFM White Wall Mount kit
910-001-006-B	BFM Black Wall Mount kit
910-3200-204-50	50 Ft RJ45 CAT6 Cable
910-3200-204-100	100 Ft RJ45 CAT6 Cable
910-3200-204-150	150 Ft RJ45 CAT6 Cable
910-3200-204-200	200 Ft RJ45 CAT6 Cable

SALES AND INQUIRIES

Headquarters

5225 Wiley Post Way
Suite 500
Salt Lake City, UT 84116

US & Canada

Tel: 801.975.7200
TollFree: 800.945.7730
Fax: 801.303.5711

International

Tel: +1.801.975.7200
global@clearone.com

Sales

Tel: 801.975.7200
sales@clearone.com

TechSupport

Tel: 801.974.3760
tech.support@clearone.com